

MODEL 1001

Universal Chassis System

The UCS 1001 is a general-purpose 1U, two slot chassis. Flexible and scalable, the UCS 1001 accommodates the entire Canoga Perkins' Universal Chassis System product line, including Optical Transponders and Repeaters, WDM, 10/100/1000 Ethernet, T-1/E-1 and T-3/E-3 Modems. It is ideal for customer premises installation, enterprise networks and military installations.

The UCS 1001 is an ideal solution when a combination of T-1/E-1 and T-3/E-3 Fiber Optic Modems, CWDM, and/or Ethernet Extension products are required. Other primary applications include Metro Ethernet Service Providers, Secure Datacom requirements, and Dark Fiber Connectivity (leased/owned fiber).

The UCS 1001 complements the UCS 1000 5U chassis for installations where only one or two modules are required, thus offering a lower cost and smaller footprint utilizing less rack space. Additionally, this chassis accommodates fully redundant T-1/E-1 modems and T-3/E-3 modems. Redundant power is also available.

Hot Swappability

All modules inserted in the two slots are hot swappable for easy replacement and will not interrupt the operation of the other module. This provides immediate recovery time.

Redundancy

The UCS 1001 chassis backplane provides communication between the two modules. In cases of full redundancy, the troubled module is able to be replaced without the interruption of operation of the sister module. The backup or redundant link or module will be monitored for operational status by the active module.

The enclosure is for tabletop or rack mounting. 19" rackmount brackets are included, and optional 23" mounting brackets are available.



World Headquarters

20600 Prairie Street
Chatsworth, CA 91311-6008
Phone (818) 718-6300 • Fax (818) 718-6312
E-mail: fiber@canoga.com



FEATURES:

- Fully Modular Carrier Class Chassis System
- Fault Tolerant and Redundant
- Cost-Effective Entry Price
- Extensive Modularity for Flexibility
- Supports 2 Hot-swappable Modules of Mixed Technology Per Chassis
- Dual AC, Dual DC, or AC/DC Power Supply Combinations
- Input/Output Alarms (Contact Closure)
- NEBS Level 3 Compliant

MODEL 1001

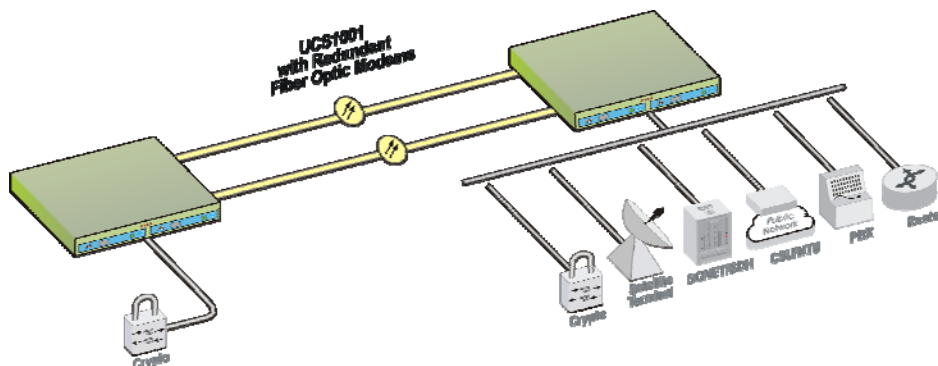
Universal Chassis System

Specifications

- **PHYSICAL**
 - Dimensions
1.719"H x 17.5"W x 14"D
(43.7mm x 444.5mm x 355.6mm)
 - Weight
4.3 lbs (1.95kg)
- **OPERATING ENVIRONMENT**
 - 0° to +50°C (32° to 122° F)
 - 5% to 90% RH (non-condensing)
- **POWER**
 - AC Power Supply
115/230 VAC, 50/60 Hz
Auto Ranging, 24W Max.
 - DC Power Supply
36 VDC to 58 VDC, 24W Max.
- **FRONT PANEL SWITCHES**
 - ALM ACK Alarm Relay Reset
- **CONNECTORS**
 - Alarm Relays (Normally Open)
8 Pin (1 for each Module Slot)
Power Supply 1 Alarm
Power Supply 2 Alarm
Major Alarm
Minor Alarm
- **REGULATORY COMPLIANCE**
 - ETL, ETLc (UL 60950 CAN/CSA C.22 No. 60950, EN/IEC 60950)
 - IEC 60825-1
 - FCC Part 15B/ICES-003/VCCI Class A
 - C-Tick (AS/NZS 3548)
 - EN 55022 Class A
 - EN 61000-3-2, EN 61000-3-3
 - EN 55024
 - NEBS Level 3
 - CE Mark



UCS 1001 Chassis with Redundant 2340 Universal Fiber Optic Modems



World Headquarters

20600 Prairie Street
Chatsworth, CA 91311-6008
Phone (818) 718-6300 • Fax (818) 718-6312
E-mail: fiber@canoga.com

TL9000
TL9000 Registered

6052600 Rev D

